

# Update SPlan Knob via USB

## 1. Hardware preparation

- (1) You need to prepare a micro USB cable. The length of the metal part of this micro USB should be greater than or equal to 8 millimeters. A common one with a length of 6 millimeters is not long enough. Or you can transform the common 6-millimeter micro USB so that it can be inserted into a slot as deep as 8 millimeters.








- (2) Connect one end of the micro USB cable to the computer, and the other end to the micro USB socket on the circuit board of the knob.

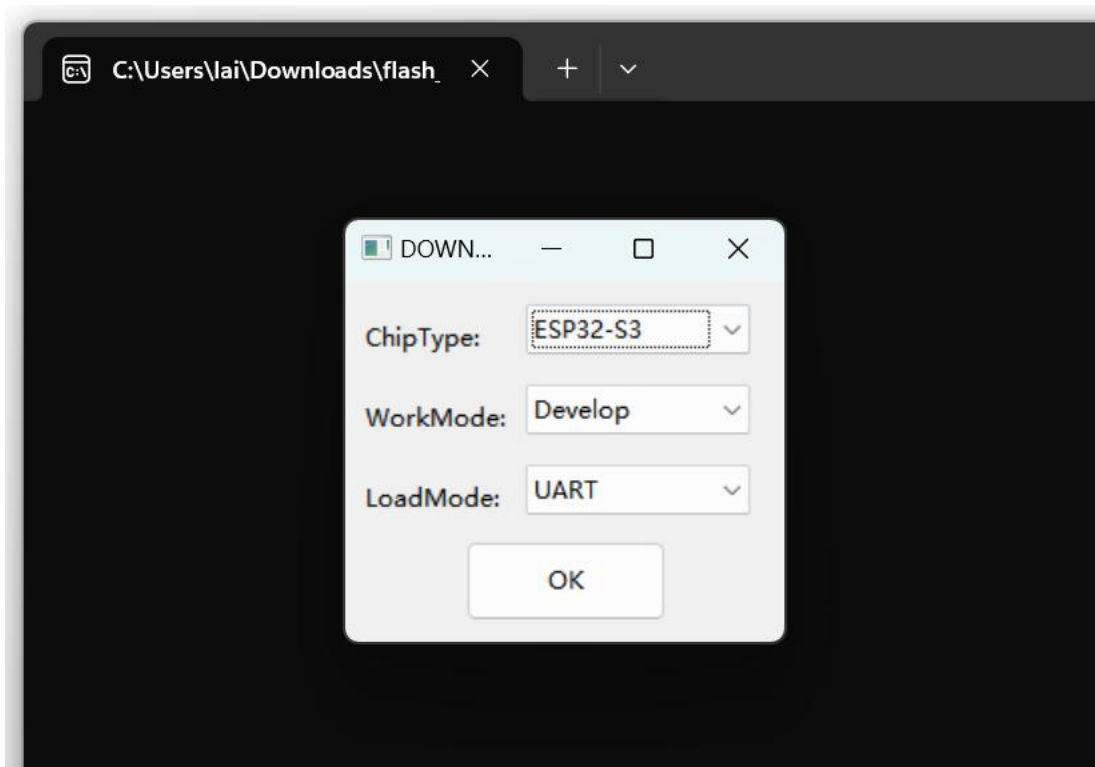


## 2. Software preparation

- (1) Unzip the compressed file **flash\_download\_tool.zip** provided by us. Run the executable file **flash\_download\_tool\_3.9.7.exe**.

名称	修改日期	类型
很久以前		
 flash_download_tool_3.9.7.exe	2024/6/7 20:42	应用程序
 release_note.txt	2024/6/7 17:34	文本文档
 bin	2024/6/7 17:29	文件夹
 logs	2024/6/7 17:28	文件夹
 secure	2024/3/19 14:45	文件夹

- (2) After running the **flash\_download\_tool\_3.9.7.exe**, the following dialog box will pop up. Select "Chip Type" as "ESP32 - S3" and click OK.



### 3. Download the BIN file

(1) If there are multiple serial ports in the COM combo box, the following steps are required to confirm. If there is only one, you can skip these steps.

- ① Press the "**Windows key + R**" to open the "Run" dialog box.
- ② Type "**devmgmt.msc**" in the "Run" input box and then press Enter.
- ③ Confirm the COM port number corresponding to the knob by plugging and unplugging the USB terminal on the computer.



(2) Select the COM number by which the knob is recognized in the COM combo box. Then click "START" to initiate the download. After waiting for the "FINISH" prompt to appear in the status, unplug and replug the USB to perform a reset.

